

**Kanaflex®**

*Company profile*

**Kanaflex®**

**Kanaflex Corporation Co., Ltd.**



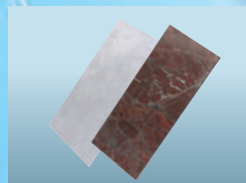
# From **Present Stage** to **Next Stage**

## For Today, Tomorrow and Beyond

“What can we do for the future?”

Kanaflex will contribute to the future, through our earth-friendly production and corporate culture.

# *CREATE INNOVATION CHANGE*





**ION**

**ALLENGE**

*Electric Equipment Materials*

*Earthwork Materials*

*Industrial Goods*

*Construction Materials*



# Electric Equipment M

## Connecting Lifelines in Today's Technology and Information Age

Electrical equipment materials are used for the networking of power and communication lines, the lifelines of today's society. They are used for work such as burying power distribution lines underground and electrical piping in intelligent buildings. Our corrugated hard synthetic resin pipes (FEP) combine a work and economic efficiencies with a lightweight and flexible product. Originally developed by using a molding method and meet the increasingly sophisticated and complex needs of work in the field.

**These products support today's transition from overhead utility lines and poles to modern underground wiring.**

### ■ [KANACRETE] Special sections



### ■ Protective ducts for burial underground





# Materials



## ■ Handhole



# Earthwork Materials

## Supporting a Stable Lifeline

Under the ground, earthwork materials play an important role in collecting and draining water.

Kanaflex supports the creation of a safe and sound environment in various places, including sewer systems, developed housing sites, roads, agricultural lands, golf courses, and playgrounds.

With our diversified product lineup, we meet needs for a variety of projects based on your location's requirements.



### ■ Lineup of Drain Pipes







Kana Puresuto



Kana Hyumu A Type  
One-touch joint type



Kana Hyumu A Type  
With one-touch earthquake-resistance joint



Kana Hyumu A Type



Kana Hyumu A Type



Kana Hyumu A Type



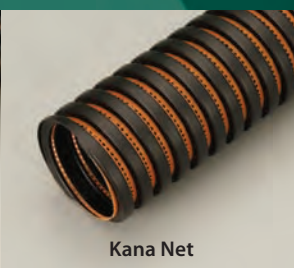
Kana Pipe A Type



Kana Pipe J Type



Kana Puresuto



Kana Net



Kana Drain



# Industrial Goods

## Supporting the Creation of a Safe and Sound Environment

Hoses and ducts are used heavily for various applications, including industrial ones such as construction, light and heavy industries, land, sea and air transportation, mining, and agriculture; and consumer industries such as automobiles and home electronics. We have realized efficient feed and transportation systems by offering highly machinable, durable, flexible and economical materials. They are strong structured products in flexible or rigid as your needs may dictate. The range of potential applications for these systems is limitless.



### ■ Ducts



Duct N.S.D. Type



Hard duct NS Type

### ■ Hoses

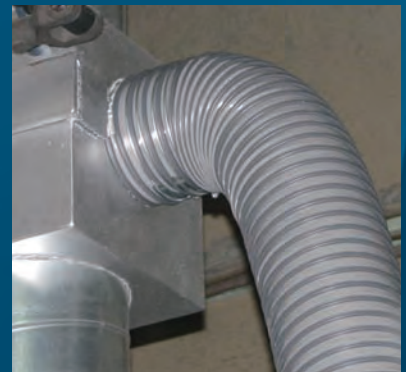


Kana Power Hose New AT



Kana Line N.S.





# Construction Materials

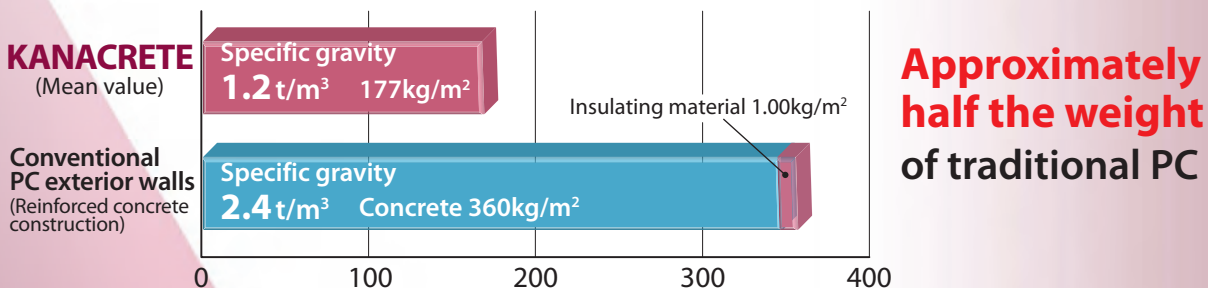
This is a new material created by Kanaflex that is lighter and stronger than reinforced concrete.

## Kanacrete®

KANACRETE contains special fibers to realize a lightweight ceramic material with a “non-reinforced structure.” The specific gravity of KANACRETE can be selected freely between 0.35 and 1.9 t/m<sup>3</sup>.

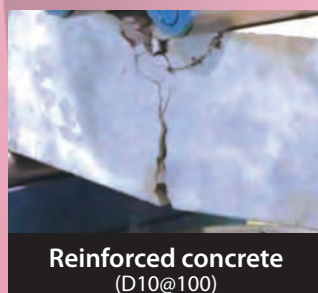
**Amazing “lightness”** KANACRETE is surprisingly light, with a specific gravity about half that of the 2.4 t/m<sup>3</sup> of conventional reinforced concrete.

● **KANACRETE panel weight comparison** (for 1.1 m<sup>2</sup>•K/W heat resistance value per square meter) (Thickness 150 mm)



**Overwhelming “Strength”** It has around twice the compressive strength and three times the bending strength of conventional reinforced concrete.

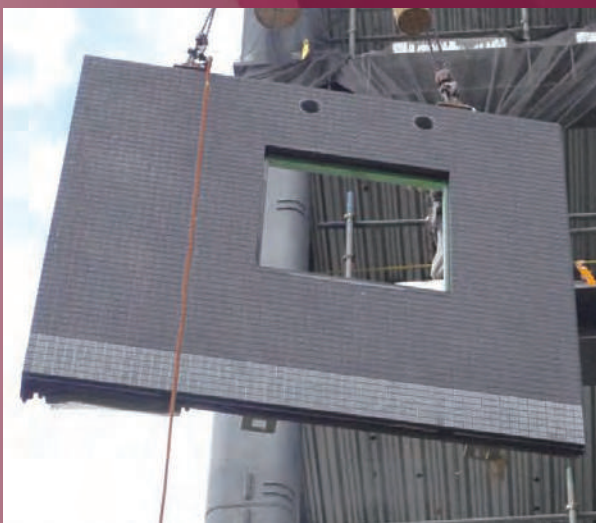
● **Flexural fracture strength**



● **Compressive strength**







Exterior wall panel using 〈KANACRETE〉



- Construction period: Approx. 2 months
- 26 panels can be attached per day



Fire protection and fireproof performance test results report  
(Issued by the General Building Research Corporation of Japan)



Minister of Land, Infrastructure Transport and Tourism certificate



# Construction Materials

## Kanaflex Tokyo Marunouchi Showroom

Visitors can view samples of KanaStone-related products.



The many exhibits include exterior wall panels made using the newly developed fiber-reinforced lightweight ceramic material "KANACRETE." There is also a kitchen using KanaStone, which customers are familiar with from commercials and elsewhere, as well as furniture, lacquered panels, and transparent glass panels.

We look forward to your visit.



Open 10:00 to 18:00  
(Closed: Sundays and national holidays)



## Natural stone composite panel

# KanaStone®

### On floors

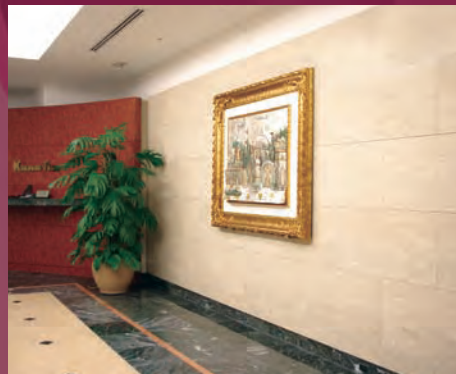
The excellent water resistance means that the stone quality will not be damaged by water infiltration from the back of the panel.

### On furniture

KanaStone has been made into panels for use on furniture by giving it even higher strength and considering its screw holding capacity. It can be used in a wide range of applications such as in the kitchen, on cupboards and on storage furniture with natural stone doors.

### On walls

KanaStone can be used for exterior walls and interior walls. It is lightweight and strong, so the installation of large pieces is easy. We also have a type of panel that has excellent sound insulating properties for use as interior wall material.



Natural stone composite panels

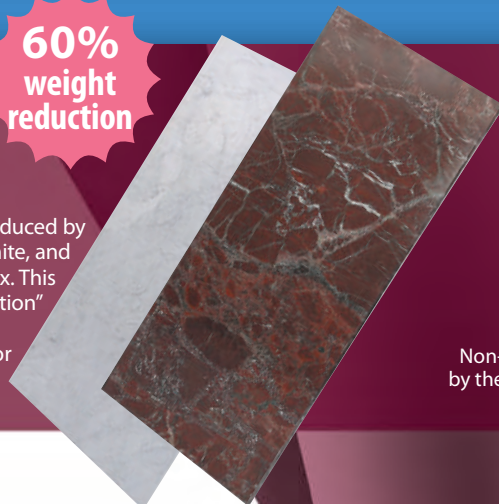
**KanaStone®**

**60% weight reduction**

KanaStone realizes “lightness”, “strength” and “ease of installation” that goes beyond the conventional norm for natural stone.

KanaStone is a composite panel of natural stone that is produced by cutting thin slices of natural stone such as marble and granite, and backing them with an original panel developed by Kanaflex. This has achieved a “lightness”, “strength” and “ease of installation” that goes beyond the conventional norm for natural stone. It also has the incombustibility performance required for interior materials. It is a new F☆☆☆☆ equivalent construction material that has excellent water resistance.

Patented product



Non-combustible material certified by the Minister of Land, Infrastructure Transport and Tourism



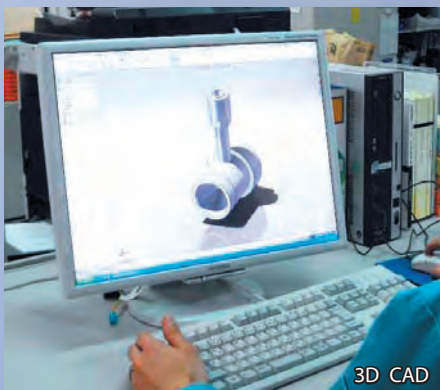
# Product Development

## Development Capabilities Respond to Your Needs

At our Technical Center, which houses our Research & Development Team, staff carefully analyze feedback from various locations and work to develop and improve products in response to this information. The large number of patents and utility models acquired demonstrates the advanced nature of our development capabilities.



Technical Center



3D CAD



Compression testing



Tensile testing



Thermostatic chamber



Weather meter



Civil engineering pipe  
watertight testing



Flat internal water  
pressure test





- This is an extremely simple and economical non-open-cut pipe restoration method. Self-supporting renewal pipes that are produced in a factory are drawn through the aging sewer pipes and then it is only necessary to perform the pipe end processing.
- Ministry of Land, Infrastructure, Transport and Tourism New Technology Information System (NETIS) Registered Technology HR-130007-A
- Acquisition of Construction Technology Review Certification from the Japan Institute of Wastewater Engineering and Technology
- Japan Sewage Works Association Certified Plant System Type II Material/Device Registration

For Japan's aging infrastructure.  
A renewal method for tomorrow and beyond.

**Self-supporting renewal pipes KanaSlip construction method**



January 1, 2017  
Japan Sewage Works Association  
Certified Plant System Type II  
Material/Device  
Registration



Sewage Works Association  
Certified Plant  
Certification No. X12501  
Composite plastic pipe renewal  
materials for sewage systems



March 30, 2017  
Japan Institute of Wastewater  
Engineering and Technology  
Construction Technology Review  
Certification obtained



# Production Plants

## High Quality Assured by Up-To-Date Facilities and Quality Control

Kanaflex's production plants continuously upgrade their production lines to ensure up-to-date facilities. We highly value quality in our products, so you can have confidence. The high-quality of our products is assured by frequent and strict inspections to detect the lowest levels of defects.











④ Chiba Plant (JIS Indication Permission No. JE0508)

# Production Locations

## Speedy Delivery Through Nationwide Networking of Production Facilities

The production plants and stock yards of Kanaflex are distributed throughout all of Japan. This vast network enables us to deliver products speedily, regardless of where it is needed.





① Hokkaido Plant



② Sendai Plant



③ Tochigi Plant (JIS Indication Permission No. GB0307182)



⑤ Aito Plant (JIS Indication Permission No. JE0508016)



⑥ Shiga Plant (JIS Indication Permission No. GB0506068)  
(Sewage Works Association Certified Plant Certification No. X12501)



⑦ Hiroshima Plant (JIS Indication Permission No. JQ0512001)



⑧ Kyushu Plant (JIS Indication Permission No. GB0810004)



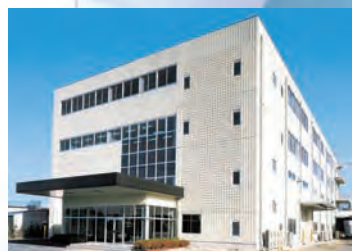
⑨ Shikoku Plant



⑩ Okinawa Plant and Business Office



⑪ Kobe Plant



⑫ Technical Division

【Stockyards】 Kanazawa, Nagoya



# Office Locations

## A Business Network for Major Japanese Cities

Kanaflex's locations cover all major Japanese cities, 12 in total.

Our large network permits us to provide convenient and efficiently mobilized services.



Osaka Main Office



Tokyo Main Office





Sapporo Business Office



Sendai Business Office



Niigata Business Office



Kanazawa Business Office



Yokohama Business Office



Nagoya Business Office



Shikoku Business Office



Hiroshima Business Office



Fukuoka Business Office



Okinawa Business Office





---

# Overseas Locations

---

## **A Brand Straddling the World**

Kanaflex's technology and products are widely appreciated not only in Japan, but throughout the world.

We have established local affiliates in U.S., Spain, and China.





**1 KANAFLEX CORPORATION of CALIFORNIA (U.S.)**  
750 West Manville Street, Compton, CA 90220, USA  
TEL. (310) 637-1616 FAX. (310) 637-9067



**2-1 KANAFLEX CORPORATION of ILLINOIS (U.S.)**  
800 Woodlands Parkway, Vernon Hills, IL 60061, USA  
TEL. (847) 634-6100 FAX. (847) 634-6249



**2-2 KANAFLEX CORPORATION of ILLINOIS (U.S.)**  
875 Woodlands Pkwy Vernon Hills, IL 60061, USA



**3 KANAFLEX ESPANA, S.A (Spain)**  
C/ Gerona, 11-Apartado 91-08120 La Llagosta,  
Barcelona, SPAIN  
TEL. (93) 560-7152 FAX. (93) 560-6662



**4 BEIJING KANAFLEX NEW CONSTRUCTION MATERIALS CO., LTD. (China)**  
北京嘉納福新型建材有限公司朝陽分公司  
ROOM 2015, CHANG FU GONG OFFICE BUILDING, JIA26, JIAN  
GUO MEN WAI STREET, CHAOYANG DISTRICT BEIJING, CHINA  
北京市朝陽區建國門外大街甲26號長富宮辦公樓2015號  
TEL. (010) 6523-7080 FAX. (010) 6523-2210



**5 KANAFLEX (JIANGSU) NEW CONSTRUCTION MATERIALS CO., LTD. (China)**  
嘉納福(江蘇)新型建材有限公司 南通工場  
No. 18 HuangHai Xi Road, Hai An Xian NanTong city,  
Jiangsu Province, China POST CODE: 226600  
江蘇省南通市海安縣黃海西路18號連德管道3樓  
TEL. (513) 8890-8819 FAX. (513) 8890-8809



# Kanaflex Corporation Co., Ltd.

- Tokyo: 6-10-1 Roppongi, Minato-ku, Tokyo, 106-6117 Japan  
(Roppongi Hills Mori Tower 17F)  
TEL. +81-3-5770-5111 FAX. +81-3-5770-5130
- Osaka: 1-8-30-Tenmabashi Kita-ku, Osaka, 530-6017 Japan  
(OAP Tower 17F)  
TEL. +81-6-6881-0767 FAX. +81-6-6881-0769
- Sapporo: 2-5 Kitagojo-nishi, Chuo-ku, Sapporo, 060-0005 Japan  
(JR Tower Office Sapporo 17F)  
TEL. +81-11-271-8770 FAX. +81-11-271-8783
- Sendai: 4-2-3 Tsutsujigaoka, Miyagino-ku, Sendai, 983-0852 Japan  
(Sendai MT Bldg. 11F)  
TEL. +81-22-792-3055 FAX. +81-22-792-3060
- Niigata: 7-1230-7 2-1-20 Higashi Odori, Chuo-ku, Niigata 950-0087 Japan  
(Station Plaza Niigata Bldg. 7F)  
TEL. +81-25-240-7778 FAX. +81-25-240-7779
- Yokohama: 5-85 Choja-cho, Naka-ku, Yokohama, 231-0033 Japan  
(Sankyo Yokohama Bldg. 8F)  
TEL. +81-45-241-7511 FAX. +81-45-241-7533
- Kanazawa: 2-15-1 Honmachi, Kanazawa, 920-0853 Japan  
(Porte Kanazawa 8F)  
TEL. +81-76-234-5660 FAX. +81-76-234-5977
- Nagoya: 3-20-17 Marunouchi, Naka-ku, Nagoya, 460-0002 Japan  
(KDX Sakuradori Bldg. 9F)  
TEL. +81-52-955-1511 FAX. +81-52-955-1515
- Hiroshima: 1-8-13 Kokutaiji-machi, Naka-ku, Hiroshima, 730-0042 Japan  
(Aioi Nissei Dowa Sonpo Hiroshima TY Bldg. 4F)  
TEL. +81-82-240-0609 FAX. +81-82-240-0610
- Shikoku: 1-2-5 Kotobuki-cho, Takamatsu, Kagawa Prefecture, 760-0023 Japan  
(Imon Takamatsu Bldg. 3F)  
TEL. +81-87-822-2690 FAX. +81-87-822-2691
- Fukuoka: 1-3-3 Hakataekimae, Hakata-ku, Fukuoka, 812-0011 Japan  
(Meiji Yasuda Watanabe Bldg. 9F)  
TEL. +81-92-474-2630 FAX. +81-92-474-2631
- Okinawa: 5-10-13 Nishizaki-cho, Itoma, Okinawa Prefecture, 901-0305 Japan  
TEL. +81-98-852-3337 FAX. +81-98-852-3358

## Kanaflex Tokyo Marunouchi Showroom

3-1-1 Marunouchi, Chiyoda-ku, Tokyo, 100-0005 Japan Kokusai Bldg. 1F  
TEL. +81-3-6268-0545 FAX. +81-3-6268-0543

## Directly Managed Plants

Hokkaido Plant, Sendai Plant, Tochigi Plant, Chiba Plant,  
Shiga Plant, Aito Plant, Kobe Plant, Hiroshima Plant, Shikoku Plant,  
Kyushu Plant, Okinawa Plant